

# True-Tension Stringing Machine String Clamp Assemblies

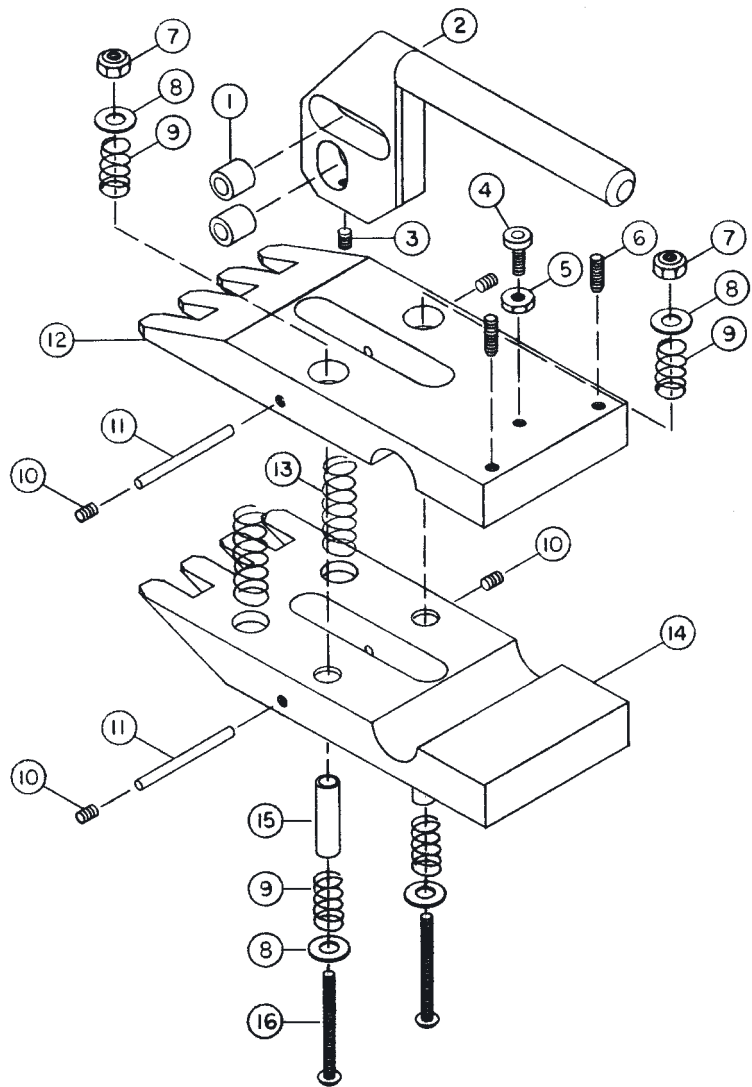
**P/N:      TTSM Clamp Descriptions:**

- 40020      Five Finger String Clamp**
- 40021      Four Finger String Clamp**
- 40022      No Finger Main String Clamp**
- 40023      Badminton String Clamp**

## TTSM String Clamps Exploded View Parts List

**ID: P/N:    Part Description:**

- 1 40003 Cam Roller
- 2 40008 Cam Assembly
- 2a 40010 Cam Body
- 2b 40002 Cam Handle (Threaded)
- 3 60012 Set Screw, 1/4-28x5/16 Dog Pt.
- 4 60026 Screw, 10-32x1/2, Pan Hd.
- 5 61006 Hex Nut, 10-32
- 6 60020 Set Screw, 10-32x1/2, 1/2 Dog Pt.
- 7 61004 Lock Nut, Nylon Insert, 6-32
- 8 62007 Flat Washer, #6 Brass
- 9 40017 Spring, Compression
- 10 60019 Set Screw, 1/4-28x1/4 Cup Pt.
- 11 40009 Pin, Cam Roller
- 12 40013 Jaw, Upper, 5 Finger
- 12 40005 Jaw, Upper, 4 Finger
- 12 40022 Jaw, Upper, No Finger Main String
- 12 40007 Jaw, Upper, Badminton
- 13 40016 Spring, Compression
- 14 40000 Jaw, Lower, 5 Finger
- 14 40004 Jaw, Lower, 4 Finger
- 14 40024 Jaw, Lower, No Finger Main String
- 14 40006 Jaw, Lower, Badminton
- 15 40012 Spacer Tube, Spring
- 16 60011 Screw, 6-32x1 1/4, Button Head



**Note:** Individual Jaws are not for sale as a Line Bored Matched Set is required to make up a Clamp Assembly.